

CT-JD-JC24-200 Current Transformer Specification

This document is intended to be used with the Packet Power 3-Phase Power Monitoring Module User's Manual. Please refer to it for important information.

Technical Specifications

CT Type: Split Core

Rated Input: 200 Amps AC (nominal)

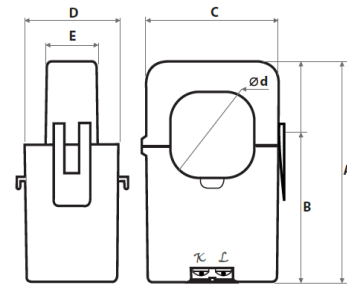
Max Input (Load): 236 A

Dimensions (mm): A:75 B:52 C:45 D:34 E:22 Dia: 24

Accuracy: +/- 1.0%

Leads: Terminal block connections; 18AWG recommended

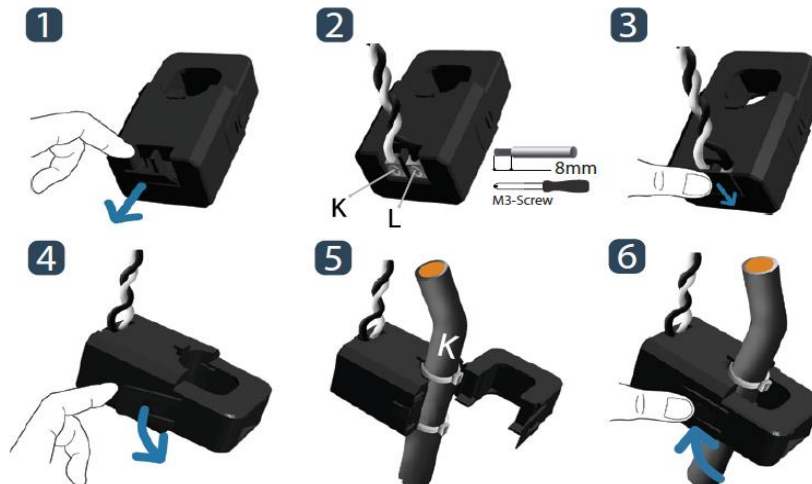
Vector Indication: the side of the CT with the lead wire openings and the label must face toward source.



Installation Notes

To install the CT on the conductor cable:

- Carefully pop out the terminal cover on the bottom of the CT. Use a screwdriver to **connect the white lead wire to the K terminal on the CT, and the black wire to the L terminal.**



- Replace the terminal cover.
- Power down the circuit prior to installation if possible.

- Only qualified personnel should install CTs on live circuits. If the CT is installed on a live circuit, it must be connected to the monitoring module or the leads must be shorted to avoid damaging the CT.
- Open the split core CT by opening the latch on the side of the CT.
- Position the CT on the conductor such that **the label and the opening for the lead wires are facing toward the supply end of the wire** and away from the load
- Ensure the latch has clicked into place.

Connecting the CTs to the Monitoring Unit:

- Be sure to connect each CT to the correct phase on the monitoring unit (refer to Packet Power's wiring diagram for the circuit type you are working on). Wiring diagrams can be found here. Note on.
- Attach the CT leads to the monitoring module while the module is not powered.
- Black wire to negative (-) terminal
- White to positive (+) terminal

